

*tribe*  
YOUTH THEATRE

THE  
**CURIOUS  
INCIDENT**

OF THE **DOG** IN THE  
**NIGHT-TIME**





Samatho Lempio-Franklin

Tribe Youth Theatre  
presents

THE  
**CURIOUS  
INCIDENT**  
OF THE **DOG** IN THE  
**NIGHT-TIME**

A PLAY BY  
**SIMON STEPHENS**

BASED ON THE NOVEL BY  
**MARK HADDON**

ORIGINAL MUSIC BY  
**MATT FRIEDMAN**  
[www.curiousincident.show](http://www.curiousincident.show)

Performed

**4—14 APRIL 2024**

The Patricia Lyon Black Box Theatre  
15-17 Allingham Street, Golden Square VIC 3556

An Amateur Production By Arrangement with ORiGiN™ Theatrical,  
on behalf of Samuel French Ltd. A Concord Theatricals Company.

Bendigo Theatre Company is located on Dja Dja Wurrung Country.  
We acknowledge and pay our respects to the elders of the Kulin Nations

**SIOBHAN**



# THE CAST

Christopher Boon.....	<b>WOLF ASTA EWAN DELLAR</b>
Siobhan .....	<b>ALIYA BLEIER AMY TOMIC</b>
Ed.....	<b>FINN CUNNINGHAM RYAN FOXLOW</b>
Judy.....	<b>AVA COSSENS KIRA COLLINS</b>
Mrs Alexander/ Posh Woman/Voice Six.....	<b>ELIZA LADNER</b>
Mrs Shears/Mrs Gascoyne/Voice One/ Woman on Train/Woman on Heath/Shopkeeper .....	<b>AJ MAREK</b>
Roger (Mr Shears)/Duty Sergeant/Voice Two/ Mr Wise/Man Behind Counter/Drunk One.....	<b>WILL CALDER</b>
Policeman One/Mr Thompson/Voice Three/ Drunk Two/Man with Socks/London Policeman .....	<b>SADIE FIELD</b>
No. 40/Voice Five/Lady in Street/Information/ Punk Girl .....	<b>KATIE HOLDAWAY</b>
Reverend Peters/Uncle Terry/Voice Four/ Station/Policeman/Station Guard.....	<b>GEORGE THOMPSON</b>

## DIRECTOR'S NOTE

Welcome to our production! As the director, I am thrilled to present to you an ensemble-driven performance that embodies the essence of youth theatre. Working with these talented young performers has been an inspiring journey, where each individual has had the opportunity to develop their skills and knowledge, not only as actors but as storytellers.

At the heart of this production is the belief in the power of ensemble work. Every member of our cast has played an integral role in shaping the narrative, contributing their unique perspectives and talents to create a cohesive and captivating theatrical experience. Together, we have embraced collaboration, understanding that the sum is truly greater than its parts.

One of the fundamental goals of this production is to explore stories from alternative perspectives.

By delving into narratives that may not always take centre stage, we aim to broaden our understanding of the human condition and foster empathy within our community.

Theatre serves as a powerful tool for empathy-building, allowing us to walk in the shoes of others and gain insight into their lived experiences.

As you watch our performance, I invite you to join us on this journey of discovery and connection. Together, let us celebrate the richness of diversity, the strength of collaboration, and the transformative power of storytelling. Thank you for supporting youth theatre and for being a part of our artistic exploration. Enjoy the show!

**KERRY TURPIE**

Director



JUDY

# BLUE CAST

## PERFORMING

Thursday 4 April at 7:00pm  
Saturday 6 April at 1:00pm  
Sunday 7 April at 1:00pm  
Friday 12 April at 7:00pm  
Saturday 13 April at 7:00pm

The Ensemble appears in all ten performances.



**WOLF ASTA**  
Christopher Boon



**ALIYA BLEIER**  
Siobhan



**FINN CUNNINGHAM**  
Ed



**AVA COSSENS**  
Judy



**WILL CALDER**  
Ensemble



**SADIE FIELD**  
Ensemble



**KATIE HOLDAWAY**  
Ensemble



# WHITE CAST

## PERFORMING

Friday 5 April at 7:00pm  
Saturday 6 April at 7:00pm  
Thursday 11 April at 7:00pm  
Saturday 13 April at 1:00pm  
Sunday 14 April at 1:00pm

The Ensemble appears in all ten performances.



**EWAN DELLAR**  
Christopher Boon



**AMY TOMIC**  
Siobhan



**RYAN FOXLOW**  
Ed



**KIRA COLLINS**  
Judy



**ELIZA LADNER**  
Ensemble



**AJ MAREK**  
Ensemble



**GEORGE THOMPSON**  
Ensemble





## SYNOPSIS

Christopher, fifteen years old, stands besides Mrs Shears' dead dog. It has been speared with a garden fork, it is seven minutes after midnight and Christopher is under suspicion. He records each fact he is writing to solve the mystery of who murdered Wellington. He has an extraordinary brain and is exceptional at maths, but he is ill-equipped to interpret everyday life. He has never ventured alone beyond the end of the road, he and he detests being touched and he distrusts strangers.

Christopher's detective work – forbidden by his father, takes him on a frightening journey that turns his world upside down.

## ABOUT THE DIRECTOR

Kerry Turpie is a theatre artist from Central Victoria. She has been working as a volunteer in community theatre for the past twenty years in Ballarat, Kyneton, Macedon, and Bendigo as a performer, writer, director, props master, lighting and sound design and operation, stage manager and production manager.

Other directing credits include *Puffs or Seven Increasingly Eventful Years at a Certain School of Magic and Magic* (Tribe Youth Theatre 2022), *Wyrd Sisters* (Kyneton Theatre Company 2007 & Tribe Youth Theatre 2018), *Rock of Ages* (Catherine McAuley College 2019), *Seussical the Musical* (Kyneton Secondary College 2007, Mount Players Youth Theatre 2014 & Catherine McAuley College 2018), *The Boyfriend* (Kyneton Secondary College 2010), *Carpe Jugulum*



(Mount Players Youth Theatre 2011), *Jekyll and Hyde: The Musical* (Kyneton Secondary College 2009), End of Year Showcases (Mount Players Youth Theatre 2010, 2012 & 2013), and *The Mikado* (Kyneton Secondary College 2008).

Kerry's writing and directing credits of one act plays include *Tracy* (Mount Players Youth Theatre, winner of best play and best director at Ararat One Act Play Festival 2010), *Flesh and Bone* (Mount Players Youth Theatre 2011), and *Restaurant Romeo* (Kyneton Secondary College 2010).



ED

# PRODUCTION TEAM



**LIZ YOUNG**  
Production Manager



**KIMMY GODFREY**  
Assistant Director



**BARB BILLINGS**  
Stage Manager



**ISLA DEVERS**  
Assistant Stage Manager



**THOMAS BELLAGIO**  
Costumes



**BAILEY CLARKE**  
Technical Manager



**STAN DEVERS**  
Lighting Team

# THE PRODUCTION TEAM

PRODUCTION MANAGER

**LIZ YOUNG**

DIRECTOR

**KERRY TURPIE**

ASSISTANT DIRECTOR

**KIMMY GODFREY**

STAGE MANAGER

**BARB BILLINGS**

ASSISTANT STAGE MANAGER

**ISLA DEVERS**

COSTUMES

**THOMAS BELLEGGIA**

TECH MANAGER

**BAILEY CLARKE**

LIGHTING DESIGN

**IAN SCOTT**

LIGHTING TEAM

**EZEKIEL BOURKE**

**JEFFERSON PORTER**

**STAN DEVERS**

PHOTOGRAPHY & POSTER DESIGN

**DANIEL SONCIN**

PROGRAM DESIGN

**KRISTEN BEEVER**

SET CONSTRUCTION TEAM

**“WEDNESDAY CREW”**

(new members always welcome!)

**Vern Wall, Colin Brown, Keva Lloyd, Sam Franklin**

# ENSEMBLE



## **GROUP AUDITION** (no preparation required)

**Monday 22 April, 2024 at 4:00pm**

Fleur Kilpatrick's adaptation of *War of the Worlds* is written for a neurodiverse and/or queer cast.

We are looking for local actors — aged 15 to 25 — who identify in this way to attend this group audition to see if this is a project that you'd enjoy working on.

The project will commence on Thursday 9 May (4-6pm) and runs for 6 weeks on Thursday evenings until 13 June 2024.

It will be led by Arena Theatre Company's Artistic Director, Christian Leavesley.

Reach out if you have any questions  
[info@arenatheatre.com.au](mailto:info@arenatheatre.com.au)

[www.arenatheatre.com.au/war-of-the-worlds](http://www.arenatheatre.com.au/war-of-the-worlds)







BENDIGO THEATRE COMPANY

# GUYS AND DOLLS

A Musical Fable of Broadway

**Production information night**

Tuesday 23 April at 7pm

**Auditions**

9, 10, & 11 May

**Audition bookings open April 23**

**Performing at**

Ulumbarra Theatre

September 2024

**Tickets on sale soon: [gotix.com.au](https://gotix.com.au)**

Based on a Story and Characters of DAMON RUNYON

Music and Lyrics by

Book by

FRANK LOESSER JO SWERLING & ABE BURROWS

Licensed exclusively by Music Theatre International (Australasia)

# tribe

YOUTH THEATRE

Founded 2017

Chair Person: Kerry Turpie  
Youth Officer: Kimberly Godfrey  
Mentor Coordinator: Liz Young

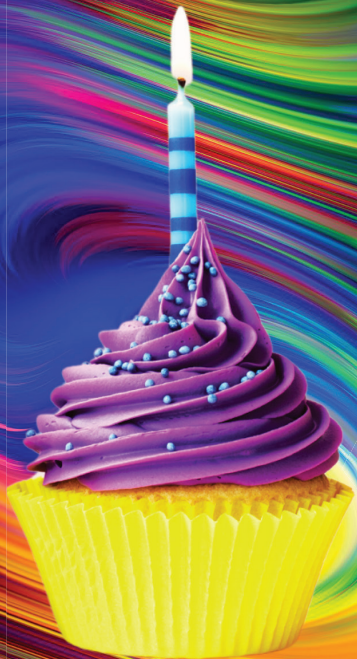
## COMMITTEE MEMBERS

Jakoby Appleby  
Zenith Bell  
Ryan Foxlow  
Emma Kelly  
Vern Wall

**In November 2024 Bendigo  
Theatre Company will  
present the TENTH season of  
our original short play series**

# TENX10

**If you're a playwright, an actor,  
director or if you are curious to  
try out any backstage or technical  
roles, talk to a committee  
member, send us an email, or keep  
an eye on the BTC Facebook page  
for dates and details.**





**BENDIGO  
THEATRE  
COMPANY**

Established 1952

## **EXECUTIVE COMMITTEE 2023-2024**

President: Vern Wall  
Vice President: Conor Cunningham  
Secretary: Jenni Clohesy  
Treasurer: Maureen Fleiner

## **GENERAL COMMITTEE 2023-2024**

Barbara Billings	Keva Lloyd
Colin Brown	Thomas Moore
Grant Finlay	Stania Tresize
Samantha Lempio-Franklin	

## **LIFE MEMBERS**

Madge Welsh (dec.)	Annie Smith
Pat Lyon (dec.)	Stania Tresize
Grace Cox	Ken Wells
Greg Harris	Maureen Fleiner
Ann Ball	Ray Smith (dec.)
Mrs Ball (dec.)	Abe Watson
Gael Emond (dec.)	John Trainor
Vern Wall	Selina Trainor
Colin Brown	Maree Kennedy

## **ANYONE CAN BECOME A BTC MEMBER!**

Support Bendigo's community theatre company.

Membership: \$35 adult | \$25 junior

Valid to 31 December each year

tribe

YOUTH THEATRE



15-17 Allingham Street, Bendigo  
[www.bendigotheatrecompany.org.au](http://www.bendigotheatrecompany.org.au)